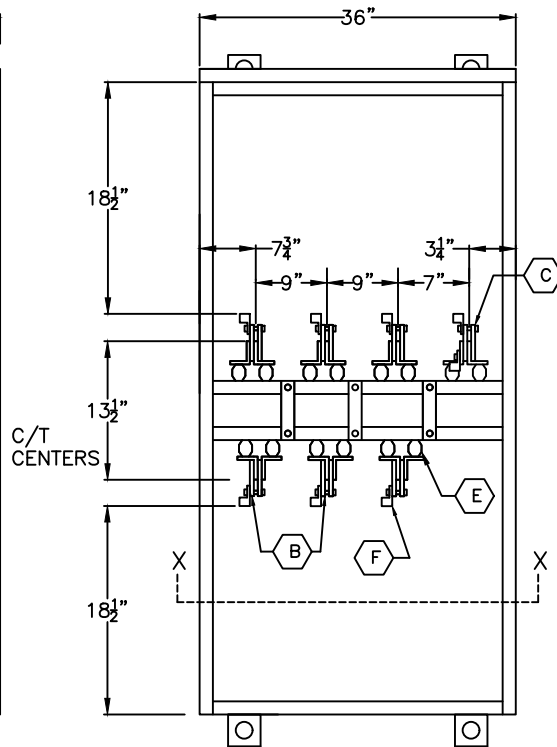
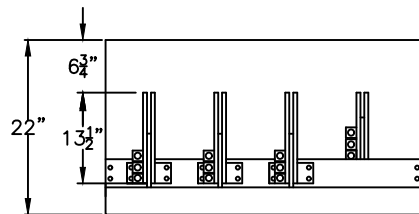


SIDE VIEW
(LESS DOOR)

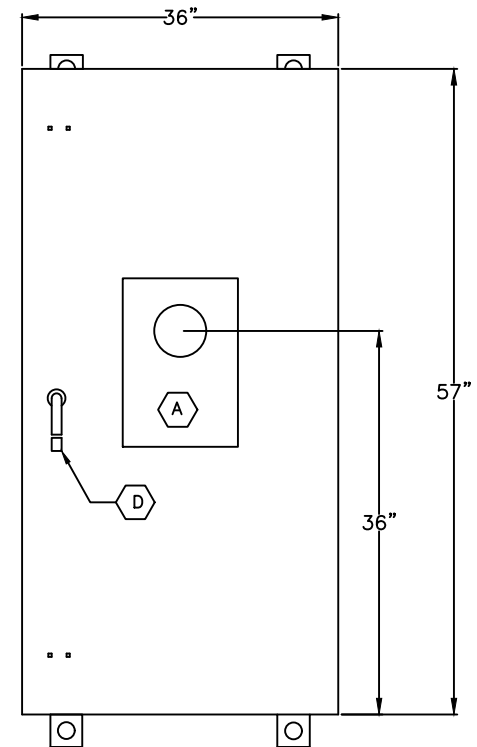


FRONT VIEW
(LESS DOOR)



VIEW AT X-X

- (A) METER FITTING, 3 ϕ 4W, C/T RATED, 13 JAW.
- (B) 2- $\frac{1}{4}$ "x4"x13- $\frac{1}{2}$ " SILVER PLATED COPPER PHASE DETAILS WITH (3) 600MCM-#4 OR (6) 350MCM-#1/0 LUGS.
- (C) 2- $\frac{1}{4}$ "x4"x13- $\frac{1}{2}$ " SILVER PLATED COPPER NEUTRAL DETAILS WITH (3) 600MCM-#4 OR (6) 350MCM-#1/0 LINE & LOAD LUGS.
- (D) PADLOCKABLE HANDLE WITH 3-POINT CATCH AND PROVISION FOR $\frac{7}{16}$ " DIAMETER LOCK
- (E) GLASTIC INSULATORS.
- (F) 3-600MCM PER PHASE & NEUTRAL.



FRONT ENCLOSED
VIEW

GENERAL NOTES:

- CURRENT TRANSFORMER METERING CABINET 3 ϕ 4W, AS PER COMED REQUIREMENTS AS PER PAGES 174 & 175.
- TYPE 3R OUTDOOR ENCLOSURE.
- ENCLOSURE MADE OF 0.125"+/-0.007" ALUMINUM



TITLE:
1200A C/T & METER FITTING (COPPER)
3 ϕ 4W 100,000A WITHSTAND RATING
TYPE 3R

JOB:

CUSTOMER:

REV: 10/31/2017
DATE: 04/22/2016
DWG#
CTMF12034

POWER DISTRIBUTION EQUIPMENT CO, INC.
3010 WILLOW STREET
FRANKLIN PARK, IL 60131
PH: (847) 455-2500; FAX: (847) 455-2595

DWN: TS

JOB#
NTS
PAGE 1 OF 1