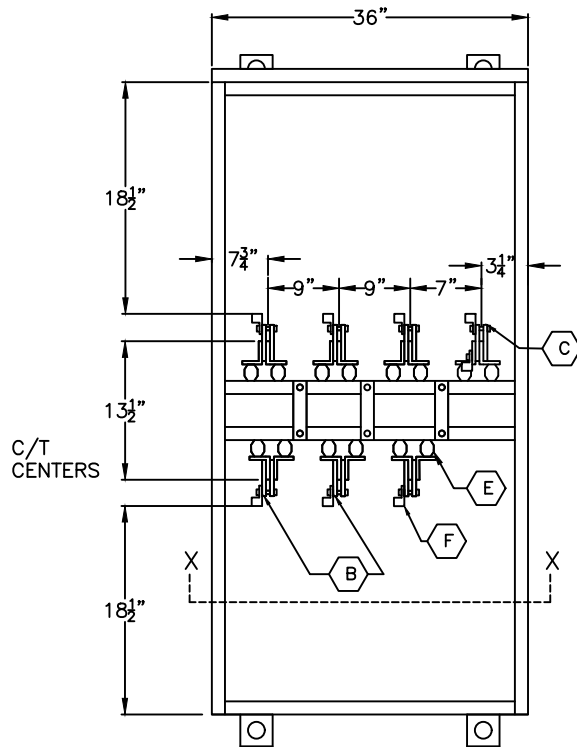
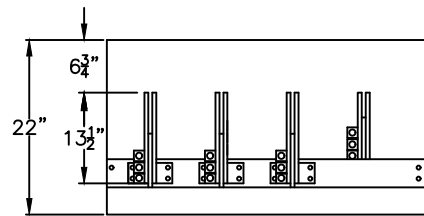


SIDE VIEW  
(LESS DOOR)

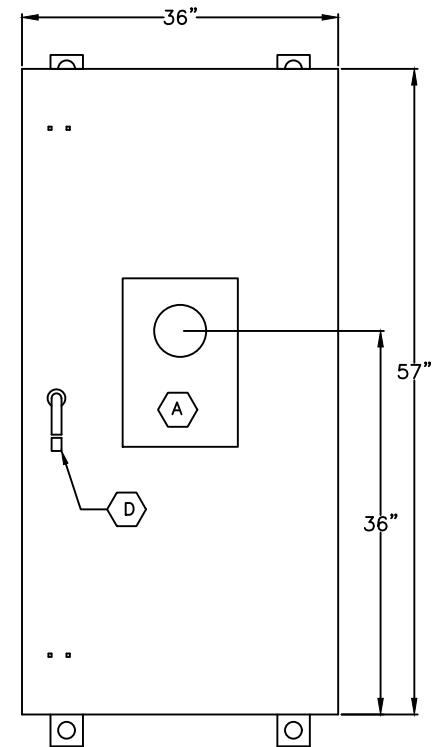


FRONT VIEW  
(LESS DOOR)



VIEW AT X-X

- A METER FITTING, 3 $\phi$  4W, C/T RATED, 13 JAW.
- B 2- $\frac{1}{4}$ "x4"x13- $\frac{1}{2}$ " TIN PLATED ALUMINUM PHASE DETAILS WITH (3) 600MCM-#4 OR (6) 350MCM-#1/0 LUGS.
- C 2- $\frac{1}{4}$ "x4"x13- $\frac{1}{2}$ " TIN PLATED ALUMINUM NEUTRAL DETAILS WITH (3) 600MCM-#4 OR (6) 350MCM-#1/0 LINE & LOAD LUGS.
- D PADLOCKABLE HANDLE WITH 3-POINT CATCH AND PROVISION FOR  $\frac{7}{16}$ " DIAMETER LOCK
- E GLASTIC INSULATORS.
- F 3-600MCM PER PHASE & NEUTRAL.



FRONT ENCLOSED  
VIEW

GENERAL NOTES:

- CURRENT TRANSFORMER METERING CABINET 3 $\phi$ 4W, AS PER COMED REQUIREMENTS AS PER PAGES 174 & 175.
- TYPE 3R OUTDOOR ENCLOSURE.
- ENCLOSURE MADE OF 0.125"+/-0.007" ALUMINUM



TITLE:  
1200A C/T & METER FITTING (ALUMINUM)  
3 $\phi$ 4W 100,000A WITHSTAND RATING  
TYPE 3R

JOB:

CUSTOMER:

REV: 10/31/2017  
DATE: 04/22/2016  
DWG#  
CTMF12034A

POWER DISTRIBUTION EQUIPMENT CO, INC.  
3010 WILLOW STREET  
FRANKLIN PARK, IL 60131  
PH: (847) 455-2500; FAX: (847) 455-2595

DWN: TS  
JOB#  
NTS  
PAGE 1 OF 1