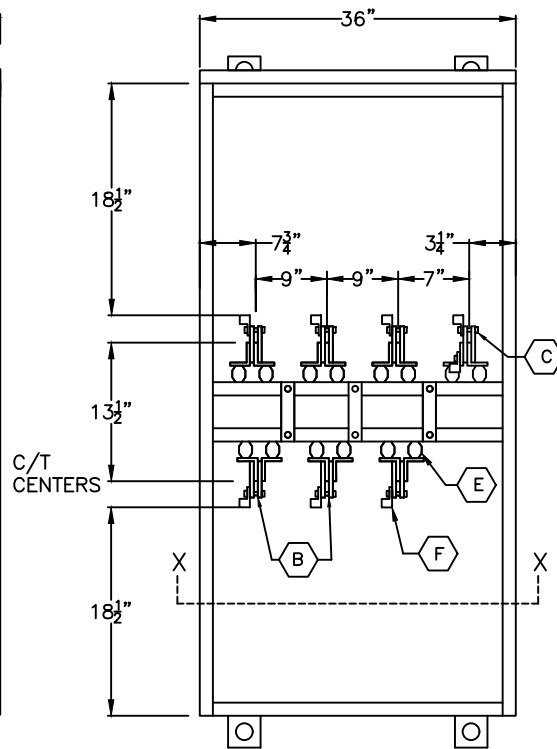
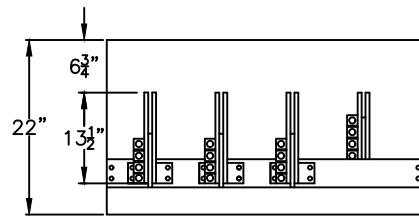


SIDE VIEW
(LESS DOOR)

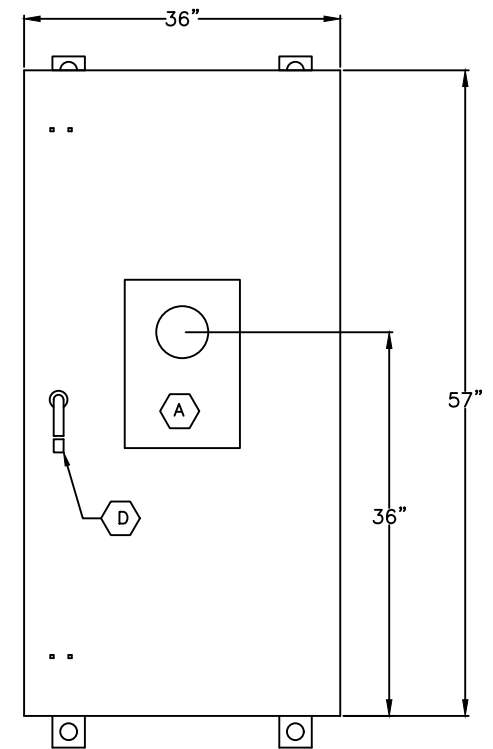


FRONT VIEW
(LESS DOOR)



VIEW AT X-X

- A METER FITTING, 3Ø 4W, C/T RATED, 13 JAW.
- B 2-1/4"x4"x13-1/2" SILVER PLATED COPPER PHASE DETAILS WITH (4) 600MCM-#4 OR (8) 350MCM-#1/0 LUGS.
- C 2-1/4"x4"x13-1/2" SILVER PLATED COPPER NEUTRAL DETAILS WITH (4) 600MCM-#4 OR (8) 350MCM-#1/0 LINE & LOAD LUGS.
- D PADLOCKABLE HANDLE WITH 3-POINT CATCH AND PROVISION FOR 7/8" DIAMETER LOCK
- E GLASTIC INSULATORS.
- F 4-600MCM PER PHASE & NEUTRAL



FRONT ENCLOSED
VIEW

GENERAL NOTES:

- CURRENT TRANSFORMER METERING CABINET 3Ø4W, AS PER COMED REQUIREMENTS AS PER PAGES 174 & 175.
- TYPE 3R OUTDOOR ENCLOSURE.
- ENCLOSURE MADE OF 0.125"+/-0.007" ALUMINUM



TITLE:
1600A C/T & METER FITTING
3Ø4W 100,000A WITHSTAND RATING
TYPE 3R

JOB:

CUSTOMER:

REV: 10/31/2017
DATE: 04/21/2016
DWG#
CTMF16034

POWER DISTRIBUTION EQUIPMENT CO, INC.
3010 WILLOW STREET
FRANKLIN PARK, IL 60131
PH: (847) 455-2500; FAX: (847) 455-2595

DWN: TS

JOB#
NTS
PAGE 1 OF 1