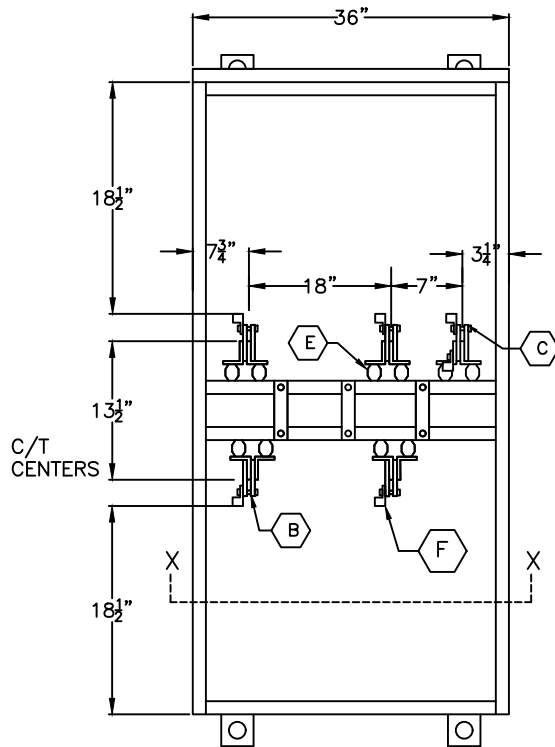
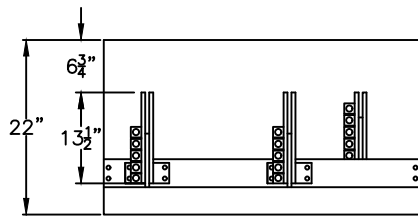


SIDE VIEW  
(LESS DOOR)

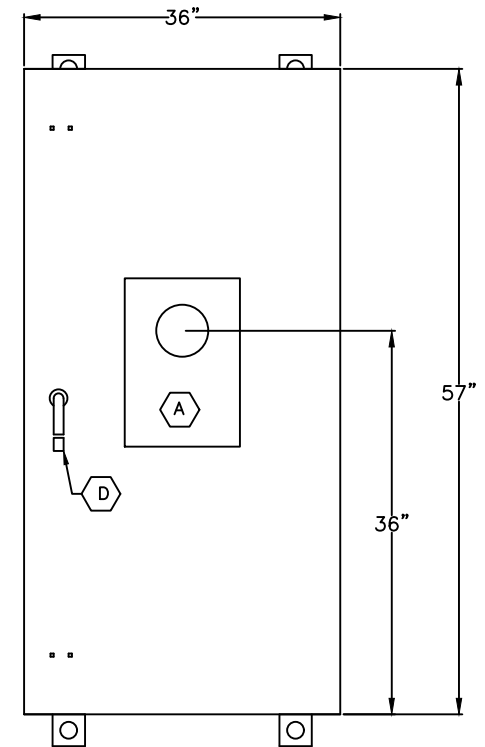


FRONT VIEW  
(LESS DOOR)



VIEW AT X-X

- (A) METER FITTING, 1Ø 3W, C/T RATED, 6 JAW.
- (B) 2-1/4"x4"x13-1/2" SILVER PLATED COPPER PHASE DETAILS WITH (5) 600MCM-#4 OR (10) 350MCM-#Ø LUGS.
- (C) 2-1/4"x4"x13-1/2" SILVER PLATED COPPER NEUTRAL DETAILS WITH (5) 600MCM-#4 OR (10) 350MCM-#Ø LINE & LOAD LUGS
- (D) PADLOCKABLE HANDLE WITH 3-POINT CATCH AND PROVISION FOR 7/16" DIAMETER LOCK
- (E) GLASTIC INSULATORS.
- (F) 5-600MCM PER PHASE & NEUTRAL



FRONT ENCLOSED  
VIEW

**GENERAL NOTES:**

- CURRENT TRANSFORMER METERING CABINET 1Ø3W, AS PER COMED REQUIREMENTS AS PER PAGES 174 & 175.
- TYPE 3R OUTDOOR ENCLOSURE.
- ENCLOSURE MADE OF 0.125"+/-0.007" ALUMINUM



TITLE:  
2000A C/T & METER FITTING  
1Ø3W 100,000A WITHSTAND RATING  
TYPE 3R

JOB:

CUSTOMER:

REV: 10/31/2017  
DATE: 04/28/2016  
DWG#  
CTMF20013

POWER DISTRIBUTION EQUIPMENT CO, INC.  
3010 WILLOW STREET  
FRANKLIN PARK, IL 60131  
PH: (847) 455-2500; FAX: (847) 455-2595

DWN: TS

JOB#  
NTS  
PAGE 1 OF 1