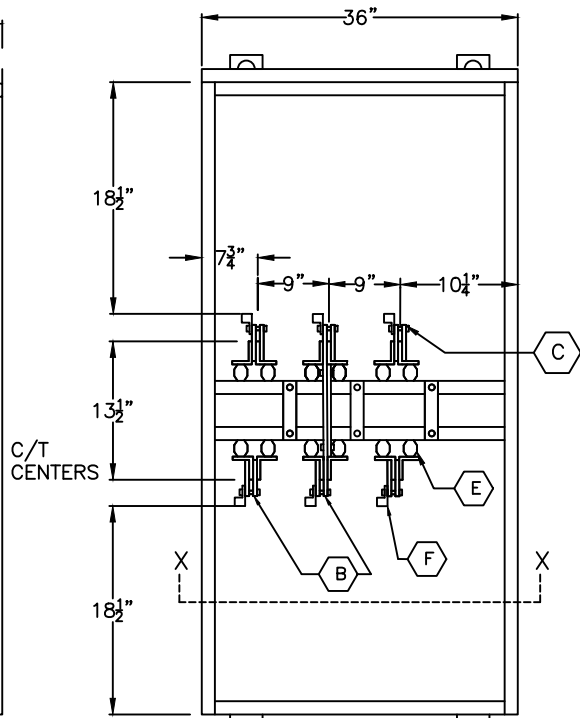
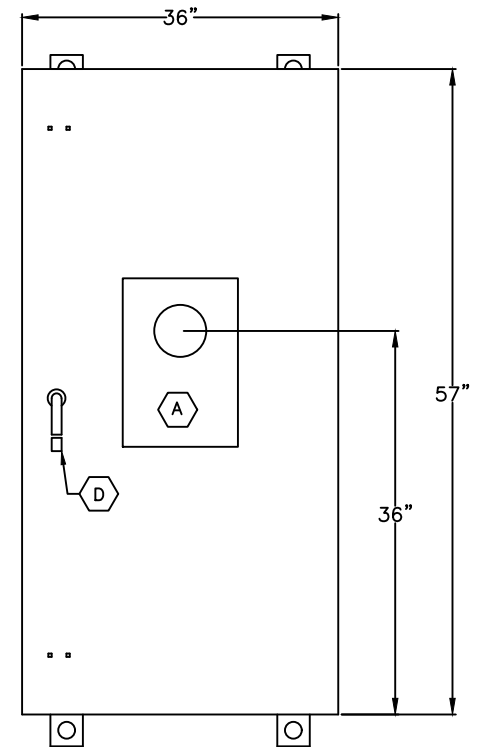


SIDE VIEW
(LESS DOOR)

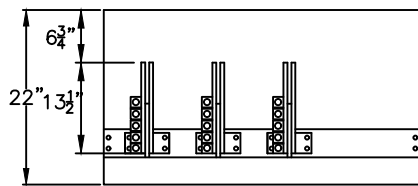


FRONT VIEW
(LESS DOOR)

- A** METER FITTING, 3 ϕ 3W, C/T RATED, 8 JAW.
- B** 2- $\frac{1}{4}$ "x4"x13- $\frac{1}{2}$ " SILVER PLATED COPPER PHASE DETAILS WITH (5) 600MCM-#4 OR (10) 350MCM-# $\frac{1}{0}$ LUGS.
- C** 2- $\frac{1}{4}$ "x4"x13- $\frac{1}{2}$ " SILVER PLATED COPPER NEUTRAL DETAILS WITH (5) 600MCM-#4 OR (10) 350MCM-# $\frac{1}{0}$ LINE & LOAD LUGS
- D** PADLOCKABLE HANDLE WITH 3-POINT CATCH AND PROVISION FOR $\frac{7}{16}$ " DIAMETER LOCK
- E** GLASTIC INSULATORS.
- F** 5-600MCM PER PHASE & NEUTRAL



FRONT ENCLOSED
VIEW



VIEW AT X-X

GENERAL NOTES:

- CURRENT TRANSFORMER METERING CABINET 3 ϕ 3W, AS PER COMED REQUIREMENTS AS PER PAGES 174 & 175.
- TYPE 3R OUTDOOR ENCLOSURE.
- ENCLOSURE MADE OF 0.125"+/-0.007" ALUMINUM



TITLE:
2000A C/T & METER FITTING
3 ϕ 3W 100,000A WITHSTAND RATING
TYPE 3R

JOB:

CUSTOMER:

REV: 10/31/2017
DATE: 04/21/2016
DWG#
CTMF20033

POWER DISTRIBUTION EQUIPMENT CO, INC.
3010 WILLOW STREET
FRANKLIN PARK, IL 60131
PH: (847) 455-2500; FAX: (847) 455-2595

DWN: TS

JOB#
NTS
PAGE 1 OF 1